



LMC

ليميتد للصيانة و المقاولات ز م م

LIMITED MAINTENANCE & CONTRACTING W.L.L

COMPANY PROFILE



77469373 / 50870576



WWW.LMCQATAR.COM



INFO@LMCQATAR.COM

SALES@LMCQATAR.COM

ABOUT COMPANY

Founded in 2010, Limited Maintenance & Contracting emerged as a pioneering force in Qatar's construction, contracting, industrial, domestic, and hospitality sectors. Recognizing a market void, we set out to provide comprehensive Civil works (Buildings & Infra), Mechanical and Electrical Maintenance services, encompassing Signage, TMA, and other essential facilities. Over the years, we've cultivated a stellar reputation, serving as trusted Contractors and Subcontractors for numerous high-profile companies in the State of Qatar. Our commitment to excellence is evident in our diverse portfolio, showcasing expertise in Civil, Electrical and Mechanical contracting, industrial maintenance, and facility management. With a dedicated team exceeding 300 professionals, including Engineers, Supervisors, Technicians, and skilled & unskilled manpower, we continue to deliver exceptional service and support, solidifying our position as industry leaders.



COMPANY DETAILS

REGISTERED NAME :
LIMITED MAINTENANCE & CONTRACTING WLL.

CR: 45245 | Doha, State of Qatar.
CONTACT : 40020065 | 50870573 | 50870576

EMAIL: INFO@LMCQATAR.COM | SALES@LMCQATAR.COM
WEB : WWW.LMCQATAR.COM

DATE OF ESTABLISHMENT: 2010

CERTIFICATIONS: ISO-CERTIFIED COMPANY

AFFILIATE'S:
Doha Kashmir Trading WLL. Registered: 2020

BANKERS:
Masraf Al Rayan Bank.
Qatar Islamic Bank





OUR VISION

Our vision is to be recognized by clients as the undisputed leader in providing Industrial Services



We aspire to set the standard for excellence in the sector, enriching communities statewide through high-quality products and ethical practices.





We empower our employees to achieve their full potential and contribute positively to the communities in which we operate.



OUR MISSION

We anticipate, identify, and meet the constantly changing needs of our customers in industrial markets. We use the strengths of our people and resources to design and support services to our valued customers.



OUR CORE VALUES

Excellence: We are committed to delivering products and services of the highest quality, exceeding the expectations of our customers and stakeholders.

Integrity: We conduct our business with honesty, transparency, and respect for all, building trust and credibility in everything we do.

Innovation: We continuously strive to innovate and improve, embracing new technologies and solutions to drive sustainable growth and value for our customers.



OUR SERVICES



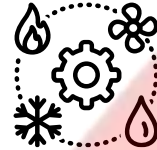
**CIVIL
CONSTRUCTION &
MAINTENANCE**
(Infra & Buildings)



**CONSTRUCTION
&
CONTRACTING**



**ELECTRICAL
CONSTRUCTION
&
MAINTENANCE**



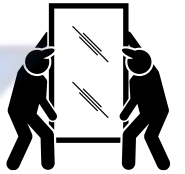
HVAC



**TRAFFIC SIGN
AND FRAMES**



PLUMBING



**MAINTENANCE
&
INSTALLATION**



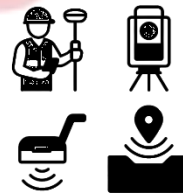
WATERPROOFING



TMA



**EQUIPMENT
RENTAL**



**GPS SURVEY &
UTILITY SCANNING**



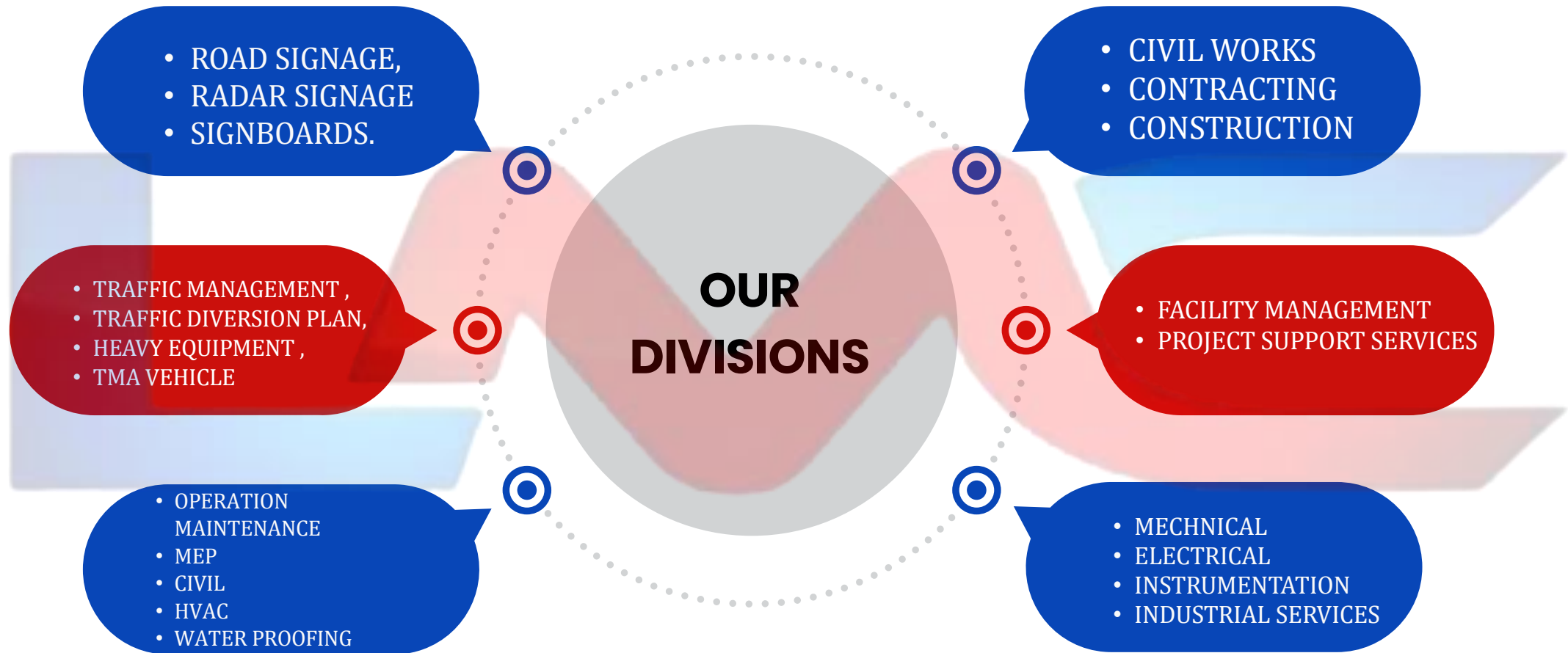
**FACILITY
MANAGEMENT**



**PROJECT
SUPPORT
SERVICES**



**TRADING & SUPPLY
OF BUILDING
MATERIAL**





CIVIL WORKS, MAINTENANCE & INSTALLATION SERVICES ELECTRICAL & MECHANICAL.

CIVIL WORKS:



We offer an extensive array of services in civil construction that cover earthworks comprising excavation, backfilling, and compaction to facilitate the installation of surface water drainage, foul sewer networks, potable water dry legs and service ducts, underground telecommunication networks, as well as Type H, Type 2H, EN6, EN4 service ducts, and other utility services. The scope also includes the construction and installation of manholes and chambers, trenching and protection of all proposed and existing underground utilities, followed by reinstatement using relevant existing materials to restore the finished surface to the required standards, in addition to building works such as fit-out, interior, and exterior finishing.



MECHANICAL:

Our mechanical services cover material handling, filters, transmission equipment, heat processes, seals, line pipe fittings, connectors, hand tools, production work over, and associated services. We also specialize in drilling equipment and localized high-pressure testing, providing comprehensive support for industrial needs.



ELECTRICAL:

In the electrical domain, we excel in installing and maintaining control panels, cable trays, cable laying, cable gland installation, and cable termination services. Our precision and reliability ensure seamless electrical system operations across diverse applications.



HVAC:

For HVAC solutions, we offer installation, maintenance, commissioning, and annual maintenance contracts (AMC) for water and air chillers, as well as package, split, and window air conditioning units. Our services cater to cooling performance optimization and energy efficiency enhancement.



SERVICE & SUPPORT:

Our dedicated technical service personnel provide comprehensive support for maintenance activities. With a team of over 250 skilled professionals in Qatar, we offer experienced assistance to ensure smooth facility operations.



CIVIL CONSTRUCTION & MAINTENANCE

We offer an extensive array of services in civil construction that cover earthworks comprising excavation, backfilling, and compaction to facilitate the installation of surface water drainage, foul sewer networks, potable water dry legs and service ducts, underground telecommunication networks, as well as Type H, Type 2H, EN6, EN4 service ducts, and other utility services. The scope also includes the construction and installation of manholes and chambers, trenching and protection of all proposed and existing underground utilities, followed by reinstatement using relevant existing materials to restore the finished surface to the required standards.

For buildings including Block Works, Partition Works, Plastering, Concreting, Waterproofing, Painting works, Cladding Works, Glass & Gypsum Works, Tile Works, Joinery / Carpentry Works, and Demolition works. With a team of dedicated professionals, we prioritize timely project completion, adherence to budget constraints, and uncompromising standards of quality and safety. Our Civil Maintenance services encompass Renovation Services, False Ceiling Works, Fabrication Works, Carpentry Works, and Flooring Services, ensuring comprehensive support for all your construction and maintenance needs.



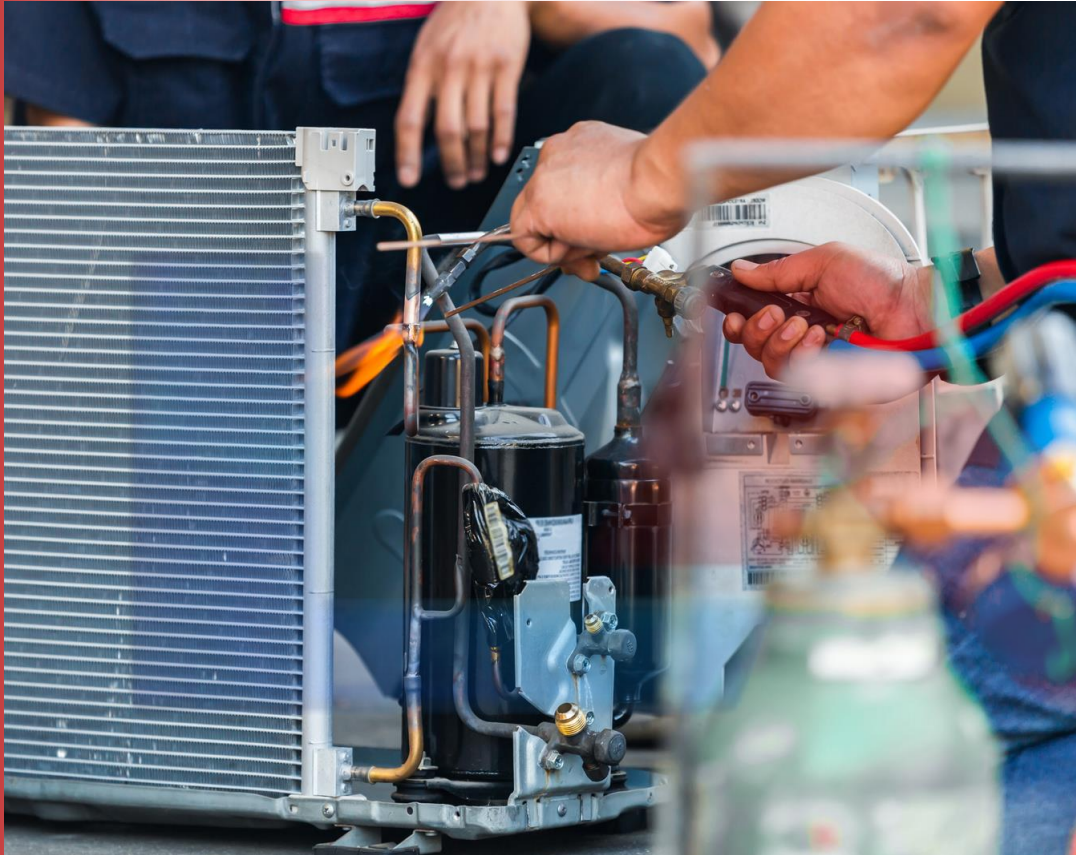
EXCAVATION WORK

Excavation is the process of removing earth, rock, or other materials from a site to create an open space for construction or other purposes. It involves digging, trenching, and grading to prepare land for foundations, roads, dry & wet utilities, or landscaping projects. Excavation is a critical part of the construction process, ensuring that the ground is properly shaped, leveled, and made safe for the next stages of work.

ELECTRICAL CONSTRUCTION & MAINTENANCE

We are expertise in the installation, fabrication & assembly of equipment or systems included in "premises wiring". Electrical Construction Work includes, but is not limited to, Installation & Maintenance of all types of Control panels. Execution of Containment of Electrical System Cable Tray, Cable Trunking, GI & PVC Embedded conducting for concealed wiring, Cable Laying, Cable Glanding, Cable Termination, Erection Testing, Pre Commissioning, Meggering & Continuity Test, Loop Check, Calibration & Commissioning.

- Installation of DB's , SMDB's , UDB's , CRAC DB's, LV & HV Panels.
- We are into electrical maintenance work, which include maintenance of Industrial and residential projects





HVAC

At LMC Qatar, we prioritize industry knowledge dissemination through various channels such as laboratory research, testing programs, and field experience. One such avenue is the Trane Air Conditioning Clinic series, designed to educate technical audiences on fundamental HVAC aspects. Our approach ensures an unbiased and transparent dissemination of information, with Trane product illustrations used only when essential to complement the text.

- Our HVAC services cover installation, maintenance, and upkeep of a wide range of systems, including FUCs, AHUs, ATUs, and VRF units, ensuring optimal performance and longevity.
- We specialize in comprehensive testing, commissioning, and air balancing for all unit types, guaranteeing efficient system operation and comfort control.
- Our expertise extends to GI and CS chill water piping, as well as precise copper brazing techniques, essential for maintaining system integrity and efficiency.
- We offer annual maintenance contracts tailored to all types of water and air chillers, along with package units. Additionally, our services include installation, maintenance, and AMC provisions for split and window units, providing complete HVAC support to our clients.

TRAFFIC SIGN AND FRAMES

Specializing in the manufacture of signs for the Road Construction industry, LMC is your one-stop destination for standard and custom signage solutions. Our cutting-edge facility enables us to craft signage using a variety of reflective sheeting and substrates, catering to your specific requirements. From monument and entry markers to builder and site identification signs, our expertise extends to routed signs, 3-D signs, sandblasted signs, and solid surface inlay signs. Utilizing only 3M Certified Materials, we ensure the highest quality and durability in every product. Additionally, our comprehensive sign shop produces standard Ashgal Traffic Signs, Street Name Signs, Temporary Plastic Signs, banners, Magnets, Vehicle decals, and vinyl decals daily. Furthermore, LMC maintains stock of all installation accessories to streamline your signage deployment process. We provide:

- Brackets
- Bolts
- Rivets
- Posts
- Banding





PLUMBING

Plumbing and sanitation work thus plays an important role in the construction of a building. A plumbing system consists of pipe fittings and appliances used for water supply and drainage. In this system, different pipes are used for different purposes. Our Job in plumbing systems includes:

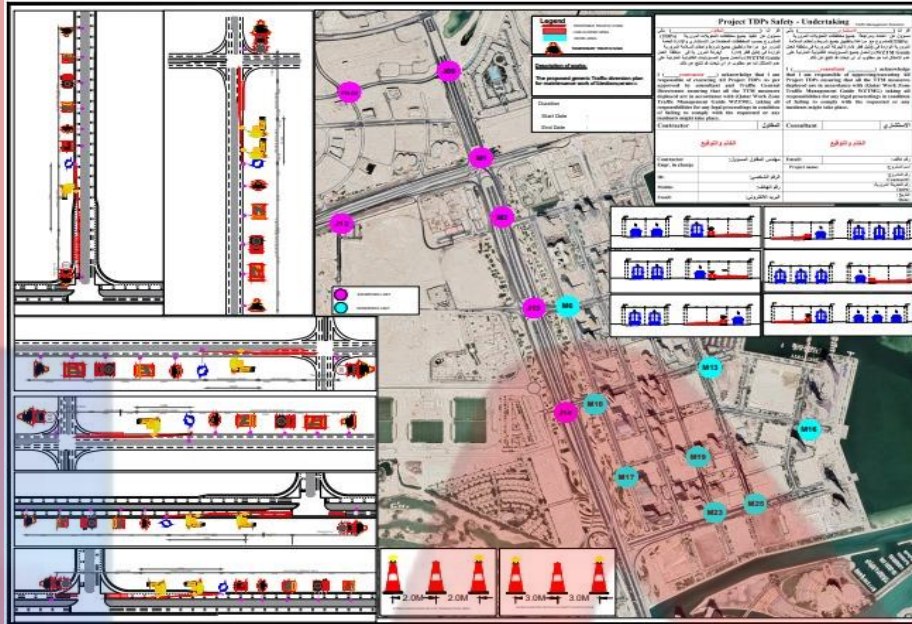
- Water Supply, GI (or plastic) pipes and fixtures;
- Soil pipes and fixtures;
- Sanitary drainage system;
- Rainwater drainage system.

For an efficient plumbing system, it is important that standard plumbing and sanitary material, as per the Standards, are used. It is also important that quality workmanship, practical checks and supervision are ensured during plumbing and sanitary work



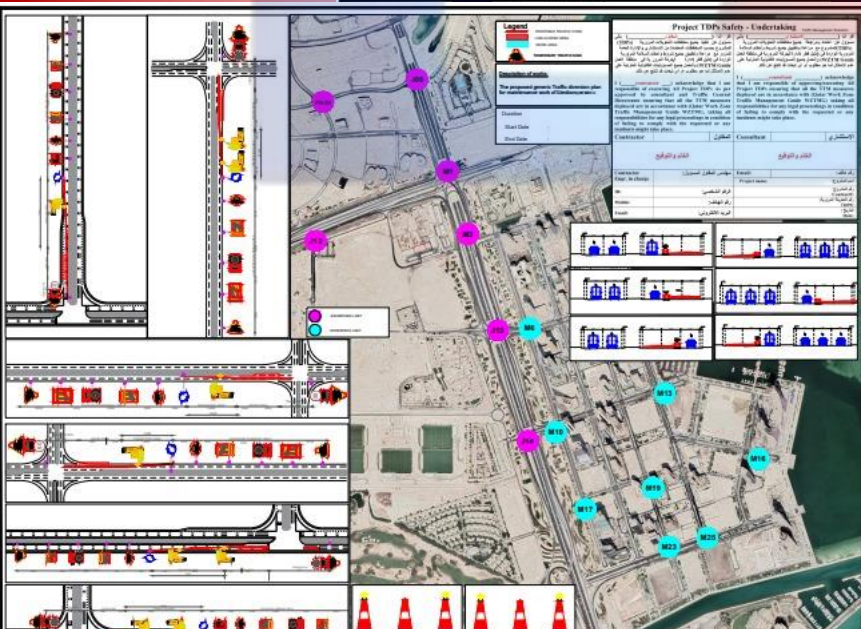
WATERPROOFING

Waterproofing is essential in construction, forming impermeable layers on surfaces like foundations and walls to prevent water penetration. This method protects buildings from moisture damage and flooding, crucial for internal and external structures. While it offers advantages like damage prevention and humidity reduction, it requires costs and maintenance. Nonetheless, waterproofing ensures buildings remain structurally sound and free from water-related issues. Professionals handle every task with precision and care, providing you and your family with peace of mind.



TRAFFIC DIVERSION PLAN (TDP)

"Our Traffic Diversion Plans are specifically designed for road-related maintenance works, ensuring safe and efficient traffic management. We focus on minimizing disruptions while prioritizing safety, utilizing clear signage, barriers, and traffic control measures to maintain smooth traffic flow. These plans protect both workers and the public, ensuring accessibility at all times. We strictly comply with the **Qatar Work Zone Traffic Management Guide** and all relevant regulations, guaranteeing the highest safety and operational standards for every project."





TMA

Safety is vital for your special event. That's why more organizations depend on LMC for crowd control and traffic safety as per the traffic Management guide of Qatar.

Let LMC provide traffic control design and planning for your next event to safeguard the public, motorists, public entities and other service providers.

Our traffic control plan will include the devices needed and the duration of equipment use, along with any details you require. LMC will place traffic safety equipment for road or lane closures and detours to make your event safe and convenient for visitors with minimal congestion for motorists.

Special event customers can also take advantage of LMC's sign manufacturing services. We are providing signages temporary and permanent as per the requirement. We can also install and remove your temporary signs and provide temporary pavement marking for lane reconfigurations, finish lines and striping for your event.



FACILITY MANAGEMENT

Our facility management services are designed to optimize the functionality and efficiency of buildings and infrastructure, ensuring they operate at peak performance. With a comprehensive approach that encompasses routine maintenance, emergency repairs, and strategic upgrades, we tailor our solutions to meet the unique needs of each client. Our experienced team of professionals is dedicated to maintaining the highest standards of safety, comfort, and operational efficiency.

We employ cutting-edge technology and best practices to manage and monitor facilities, ensuring that every aspect, from HVAC systems and electrical networks to plumbing and structural integrity, is meticulously maintained. Our proactive maintenance programs help prevent issues before they arise, reducing downtime and extending the lifespan of your assets.

Additionally, we offer specialized services such as space planning, energy management, and sustainability initiatives, all aimed at enhancing the productivity and well-being of occupants. Whether managing a single building or an extensive portfolio of properties, our commitment to excellence ensures that your facilities are always in top condition, allowing you to focus on your core business activities without worry.





PROJECT SUPPORT SERVICES

Central to our ethos is an unwavering dedication to delivering unparalleled project support services. Anchored by our unwavering commitment, our proficient team orchestrates the flawless execution of projects regardless of their scale or complexity. With a keen focus on excellence, we provide a suite of services encompassing logistical prowess, meticulous resource coordination, and expert timeline management. This steadfast dedication ensures not just success but the surpassing of expectations at every turn



TRADING & SUPPLY OF BUILDING MATERIAL

Positioned at the forefront of the industry, our trading and supply division stands as a beacon of reliability and excellence in providing essential building materials. With an expansive inventory and a commitment to quality, we offer a diverse range of top-tier products meticulously curated to meet the dynamic demands of construction projects. From foundational elements to specialized components, our comprehensive selection ensures that every aspect of your project is fortified with superior materials. Backed by robust supply chain management, we guarantee timely delivery and unwavering consistency, empowering your ventures with the strength and durability they deserve. Whether it's sourcing raw materials or delivering finished products, our dedicated team remains steadfast in its mission to elevate your projects to unparalleled heights of success and longevity.



GPS SURVEY AND UTILITY SCANNING SERVICES

At Limited Maintenance & Contracting, we provide professional GPS surveying services to deliver precise coordinate data for your projects. Our high-accuracy equipment ensures your planning and construction align with exact site measurements from the start.

We also offer utility scanning up to 5 meters deep using the advanced RD8100 cable and pipe locator, designed for high-precision detection of underground utilities. This technology helps prevent damage to buried cables and pipelines, supporting a safer, smoother workflow and minimizing costly delays.

With our expertise and cutting-edge tools, you can move forward confidently—knowing your site is fully mapped and risks are reduced.





INDUSTRIAL & DOMESTIC CLEANING SERVICES

In domestic settings, we offer comprehensive cleaning solutions that keep homes pristine and welcoming. From regular housekeeping to detailed deep cleaning sessions, our services are designed to meet the specific needs of homeowners. We use eco-friendly products and advanced cleaning techniques to ensure a healthy living space for you and your family.

Our commitment to excellence means that we pay attention to every detail, leaving no corner untouched. Whether it's removing stubborn stains, sanitizing surfaces, or maintaining overall cleanliness, our team works diligently to exceed your expectations. With our industrial and domestic cleaning services, you can enjoy peace of mind knowing that your spaces are impeccably clean and well-maintained.

CERTIFICATION HIGHLIGHTS



Certificate

This is to Certify that

Limited Maintenance & Contracting WLL

Doha, Qatar PO 7346

has been found in Compliance with requirements of
Quality Management System
ISO 9001:2015
for the following scope:

Deals in Construction & Contracting, Electrical & Mechanical, MEP Maintenance, Facility Management, Support Service and HVAC Maintenance

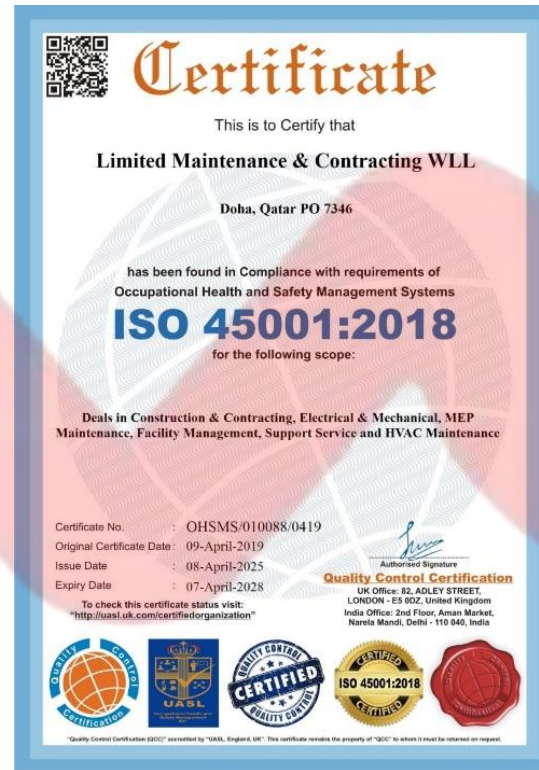
Certificate No. : QMS/010086/0419
Original Certificate Date : 09-April-2019
Issue Date : 08-April-2025
Expiry Date : 07-April-2028

Authorized Signature
Quality Control Certification
UK Office: 82, ADLEY STREET,
LONDON - E3 8DZ, United Kingdom
India Office: 2nd Floor, Aman Market,
Narela Mandi, Delhi - 110 040, India

To check this certificate status visit:
"<http://uasl.uk.com/certifiedorganization>"



*Quality Control Certification (QCC) accredited by "UASL, England, UK". This certificate remains the property of "QCC" to whom it must be returned on request.



Certificate

This is to Certify that

Limited Maintenance & Contracting WLL

Doha, Qatar PO 7346


has been found in Compliance with requirements of
Occupational Health and Safety Management Systems
ISO 45001:2018
for the following scope:

Deals in Construction & Contracting, Electrical & Mechanical, MEP Maintenance, Facility Management, Support Service and HVAC Maintenance

Certificate No. : OHSMS/010088/0419
Original Certificate Date : 09-April-2019
Issue Date : 08-April-2025
Expiry Date : 07-April-2028

Authorized Signature
Quality Control Certification
UK Office: 82, ADLEY STREET,
LONDON - E3 8DZ, United Kingdom
India Office: 2nd Floor, Aman Market,
Narela Mandi, Delhi - 110 040, India

To check this certificate status visit:
"<http://uasl.uk.com/certifiedorganization>"



*Quality Control Certification (QCC) accredited by "UASL, England, UK". This certificate remains the property of "QCC" to whom it must be returned on request.



Certificate

This is to Certify that

Limited Maintenance & Contracting WLL

Doha, Qatar PO 7346

has been found in Compliance with requirements of
Environmental Management System
ISO 14001:2015
for the following scope:

Deals in Construction & Contracting, Electrical & Mechanical, MEP Maintenance, Facility Management, Support Service and HVAC Maintenance

Certificate No. : EMS/010087/0419
Original Certificate Date : 09-April-2019
Issue Date : 08-April-2025
Expiry Date : 07-April-2028

Authorized Signature
Quality Control Certification
UK Office: 82, ADLEY STREET,
LONDON - E3 8DZ, United Kingdom
India Office: 2nd Floor, Aman Market,
Narela Mandi, Delhi - 110 040, India

To check this certificate status visit:
"<http://uasl.uk.com/certifiedorganization>"



*Quality Control Certification (QCC) accredited by "UASL, England, UK". This certificate remains the property of "QCC" to whom it must be returned on request.



EQUIPMENT RENTAL





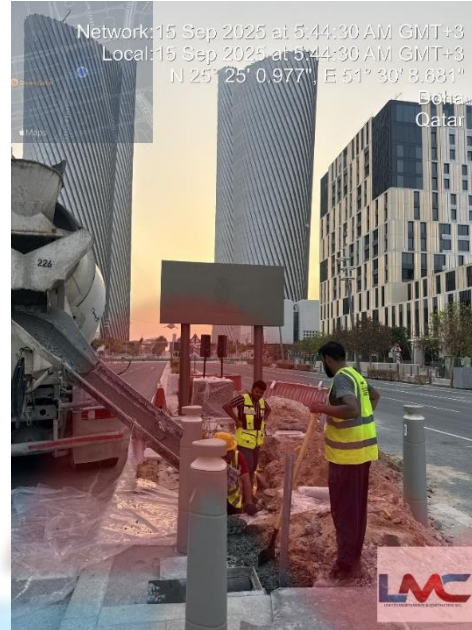
Explore how we transform visions into reality,
setting new standards in the industry.



OUR PROJECTS

Discover our prestigious projects, where innovation meets excellence. Each endeavour showcases our commitment to quality, sustainability, and design.

EARTH WORKS - LUSAIL



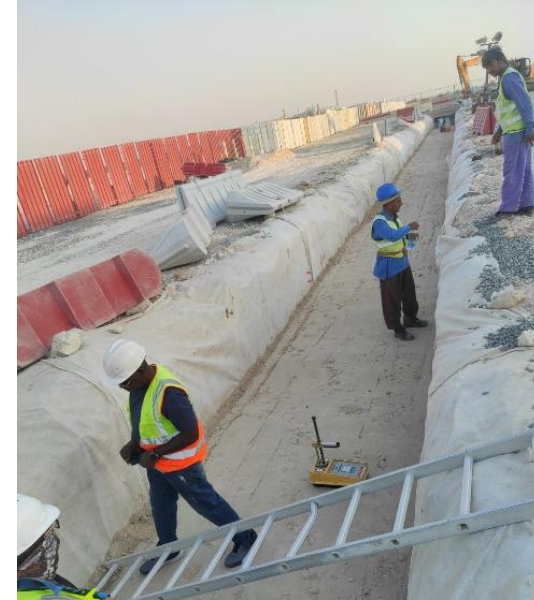
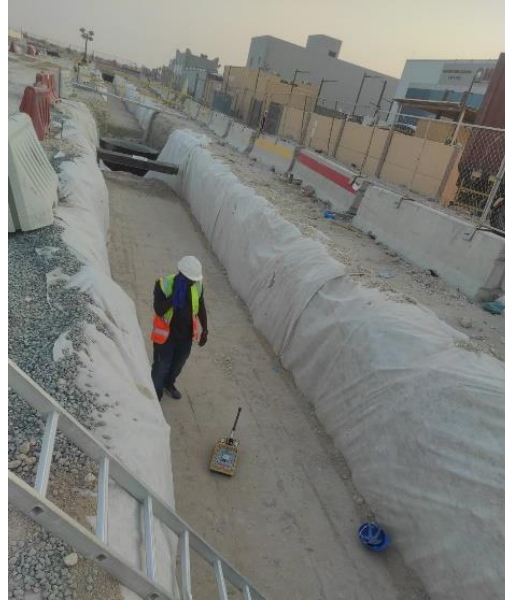


EXCAVATION SURVEY WORKS





EXCAVATION WORKS





EXCAVATION WORKS FOR MANHOLE INSTALLATION



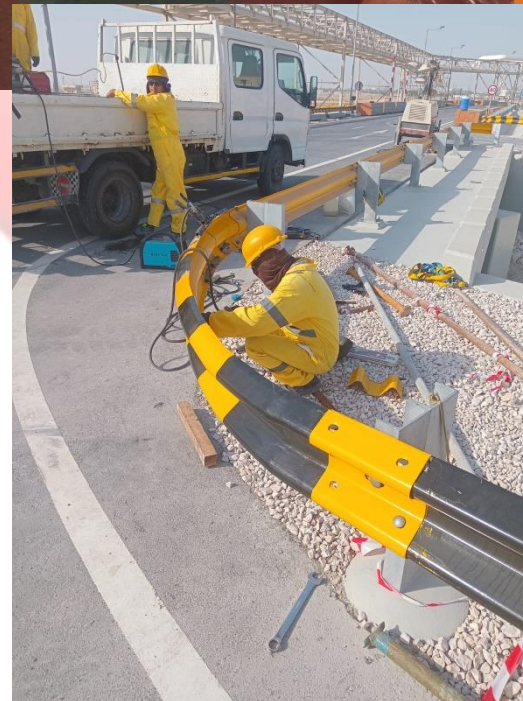


CONSTRUCTION OF MAJLIS





SUPPLY & INSTALLATION OF CRASH BARRIERS - QATAR ENERGY





SUPPLY & INSTALLATION OF TRAFFIC SIGNAGES - QATAR ENERGY





THE CHEDI KATARA – OFFICE & GAZEBO





THE CHEDI KATARA – CAFÉ'





FIT OUT WORK





WATERPROOFING WORK





FIT OUT WORKS – CITY GATE HOTEL





COMPLETED PROJECTS (2023 - 2024)

- JOOL JEWELRY (FIT OUT / MEP) LANDMARK / PEARL QATAR.
- RENOVATION OF CITY GATE HOTEL (MEP / FITOUT) DOHA.
- MAJLIS - FITOUT / MEP - BANI HAJIR QATAR.
- QEMG (DOHALIVE): (ELECTRICAL) DOHA, QATAR
- AL DARWISH ENGINEERING (DUKHAN QP): (CHILL WATER INSULATION)
- TELCO INTERNATIONAL: TRAFFIC MANAGEMENT/TRAFFIC DIVERSION PLANS/HEAVY EQUIPMENTS.
- REDCO INTERNATIONAL: (SUPPLY OF HEAVY EQUIPMENT)
- AI KABI ENGINEERING (QP DISTRICT): (DRYWALL PARTITION/CEILING / FITOUT)
- AI MOAYYED AIR CONDITIONING (DAFNA TOWER / DRYWALL: (DRYWALL PARTITION / CEILING) ARCON
- (CUBA HOSPITAL DUKHAN): (FIT-OUT & CIVIL MAINTENANCE)
- CAPE EAST (RASLAFFAN): ((MAINTENANCE)
- ABJ GROUP (NOORA PARK): (MAINTENANCE / FIT OUT WORKS)
- PETROTEC (PANEL INSTALLATION)
- DOHA GOLF CLUB DOHA : (CIVIL / ELECTRICAL & IT)
- BARWA CLUB HOUSE: (RENOVATION FITOUT WORK & MEP MAINTENANCE) ALFARDHAN (DOHA): (CIVIL, MEP & RENOVATION FITOUT)
- KENTECH - RASLAFFAN (INSTRUMENTATION & MAINETENACE)
- HERMES - CMM (HAMAD INTERNATIONAL AIRPORT) (FITOUT & HVAC)
- AL RAYEES LAUNDRY BARWA VILLAGE DOHA : (CIVIL, FIT OUT & MEP)
- SIRAJ SOLAR FORM (800.001MW) PROJECT: (CABLING & PANEL INSTALLATION) DREAM HOTEL DOHA : (ELECTRICAL) DOHA, QATAR



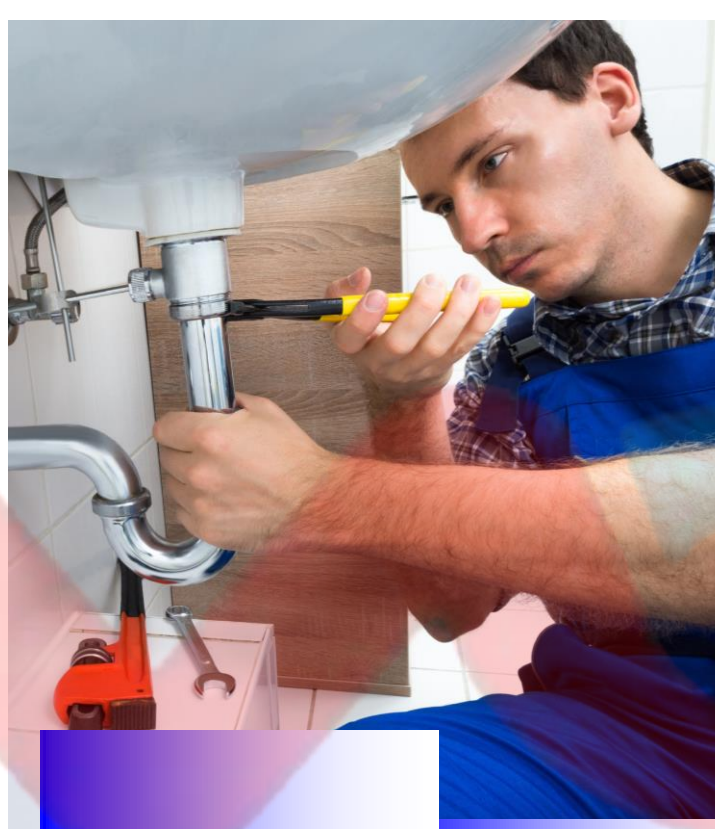
ONGOING PROJECTS 2024-2025

- QAF CIVIL EXCAVATION WORKS
- SUPPLY OF VEHICULAR GUARD RAILS – QATAR ENERGY
- SUPPLY OF TRAFFIC SIGNAGES - QATAR ENERGY
- PREPARATION OF TRAFFIC DIVERSION PLAN(TDP) – TRAGS QATAR
- CONSTRUCTION OF MAJLIS - BANI HAJIR - DOHA
- CONSTRUCTION OF BEACH SIDE WOODEN KIOSK CAFÉ - THE CHEDI KATARA
- CONSTRUCTION OF BEACH SIDE WOODEN GAZEBO THE CHEDI KATARA
- VILLA RENOVATION - DOHA
- MEP WORK - QATARI VILLA 6 NO- DOHA
- FULL RENOVATION WORKS MAJLIS - DOHA
- ELECTRICAL MAINTENANCE PETROTECH - DOHA
- MEP MAINTENANCE - ABJ GROUP - DOHA



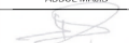









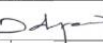

OUR TEAMS

- Project Directors
- Project Managers
- Project Engineers
- MEP Engineers
- Civil Engineers
- Electrical Engineers
- Mechanical Supervisor
- Electrical Supervisor
- Instrument Supervisor
- Electrical Technicians
- Mechanical Technicians
- Instrument Technicians
- Pipe Fitters
- Welders 4G
- Welders 6G
- HVAC Supervisors
- HVAC / AC Technicians
- Plumbers
- Mason's
- Skilled Helpers
- General Labors



APPROVALS

		Project / Contract No.:GC20105600 / 4299			
EPIC FOR NEW GASOLINE AND JET STORAGE FACILITIES IN MIC					
MATERIAL APPROVAL REQUEST (MAR)					
MAR NO.	4299-14-MS-2412	REV NO.	0	DATE	17-Sep-2024
Discipline Code:	0=General 1= Civil 2= Electrical 3= Safety & Loss prevention, 4= Instrumentation,	5= Mechanical 6= Process 7= Pipeline 8= Telecom & SCADA 9= Architectural / Building			
1					
REQUESTED MATERIAL DESCRIPTION: MATERIAL SUBMITTAL FOR TRAFFIC SIGN BOARDS (MS LMC)					
Sr. No	Product Description	Trade Name	Manufacturers	Listed in QatarEnergy PPML	If listed in PPML
1	TRAFFIC SIGN BOARDS	Limited Maintenance & Contracting WLL (LMC)	NPTC, AVERY DENNISON, CBC	YES <input type="checkbox"/>	PPML Category Number
				NO <input type="checkbox"/>	N/A
				ORIGIN	Model No, and any other specific details
				QATAR	N/A
TECHNICAL DETAILS					
Specification/ Drawings Nos.	QCS 2014 SECTION 6 PART 13, DWG # 4299-21A-14-30-0011				
Brief details of Project Technical Requirements	As per Technical Requirements of QCS 2014 SECTION 6 PART 13 & As per AFC Drawings of Interconnecting Roads				
Location/s of USE	EPIC for New Gasoline and Jet Storage facites in Mesaieed MIC				
Technical Details of Proposed Material (Attach Properties comparison Statement, required vs proposed, where applicable	Refer to the Attached Material Technical DataSheet				
ATTACHMENTS*					
Documents / Records	1. QatarEnergy PPML Extract, If applicable	<input type="checkbox"/>	6. Material Safety Data Sheets	<input checked="" type="checkbox"/>	
	2. Specification / Drawing extract	<input checked="" type="checkbox"/>	7. Product Test Reports	<input checked="" type="checkbox"/>	
	3. Product catalogue/s	<input checked="" type="checkbox"/>	8. Lab Test Reports	<input checked="" type="checkbox"/>	
	4. Material Technical Data Sheet	<input checked="" type="checkbox"/>	9. MTCs	<input checked="" type="checkbox"/>	
	5. Material Properties Comparison Statement	<input checked="" type="checkbox"/>	10. Other, specify	<input type="checkbox"/>	
Material Sample/s	Sample Details (Name, Size, Color, etc.)		Delivered to (QatarEnergy location, dt.)		
	1	N/A			
	2				
	3				
* Identify No. of pages in each attachment and include Book marks in PDF submitted to QatarEnergy.					
Responsibility	Prepared/ Requested by	Checked By	Reviewed By	Approved By	
Designation	QA/QC LEAD (MRRRIKH)	DISCP. ENGINEER	QA/QC REP	QA/QC Manager	
Name	ABDUL MAJID	SAIF	SHAHID		
Sign					
Date	17-Sep-2024		26-09-2024		
Note: Approved copy of this document with QatarEnergy transmittal shall be made available during the Material Receiving Inspection at site.					

		Project / Contract No.:GC20105600 / 4299			
EPIC FOR NEW GASOLINE AND JET STORAGE FACILITIES IN MIC					
MATERIAL APPROVAL REQUEST (MAR)					
MAR NO.	4299-14-MS-2234	REV NO.	1	DATE	25-May-2024
Discipline Code:	0=General 1= Civil 2= Electrical 3= Safety & Loss prevention, 4= Instrumentation,	5= Mechanical 6= Process 7= Pipeline 8= Telecom & SCADA 9= Architectural / Building			
1					
REQUESTED MATERIAL DESCRIPTION: MATERIAL SUBMITTAL FOR VEHICLE IMPACT GUARD RAIL/ BARRIER					
Sr. No	Product Description	Trade Name	Manufacturer	Listed in QatarEnergy PPML	If listed in PPML
1	VEHICLE IMPACT GUARD RAIL	Limited Maintenance & Contracting (LMC)	Limited Maintenance & Contracting (LMC); CLIC QATAR	YES <input type="checkbox"/>	PPML Category Number
			ORIGIN	Model No, and any other specific details	
			QATAR	N/A	
TECHNICAL DETAILS					
Specification/ Drawings Nos.	QCS 2014 SECTION 6 PART 10, Drawing # 4299-21A-14-30-0009				
Brief details of Project Technical Requirements	As per the details mentioned in the above referred Drawing				
Location/s of USE	Along Interconnecting Roads as shown in AFC Drawings				
Technical Details of Proposed Material (Attach Properties comparison Statement, required vs proposed, where applicable	Refer to the Attached Compliance Certificates				
ATTACHMENTS*					
Documents / Records	1. QatarEnergy PPML Extract, If applicable	<input type="checkbox"/>	6. Material Safety Data Sheets	<input checked="" type="checkbox"/>	
	2. Specification / Drawing extract	<input checked="" type="checkbox"/>	7. Product Test Reports	<input checked="" type="checkbox"/>	
	3. Product catalogue/s	<input checked="" type="checkbox"/>	8. Lab Test Reports	<input checked="" type="checkbox"/>	
	4. Material Technical Data Sheet	<input checked="" type="checkbox"/>	9. MTCs	<input checked="" type="checkbox"/>	
	5. Material Properties Comparison Statement	<input checked="" type="checkbox"/>	10. Other, specify	<input type="checkbox"/>	
Material Sample/s	Sample Details (Name, Size, Color, etc.)		Delivered to (QatarEnergy location, dt.)		
	1	N/A			
	2				
	3				
* Identify No. of pages in each attachment and include Book marks in PDF submitted to QatarEnergy.					
Responsibility	Prepared/ Requested by	Checked By	Reviewed By	Approved By	
Designation	QA/QC LEAD (MRRRIKH)	PROJECT ENGINEER	WORK SITE LEAD	QA/QC MANAGER	
Name	ABDUL MAJID	SAIF	ARAVIND		
Sign					
Date			2 Jun 24	02nd June 2024	
Note: Approved copy of this document with QatarEnergy transmittal shall be made available during the Material Receiving Inspection at site.					

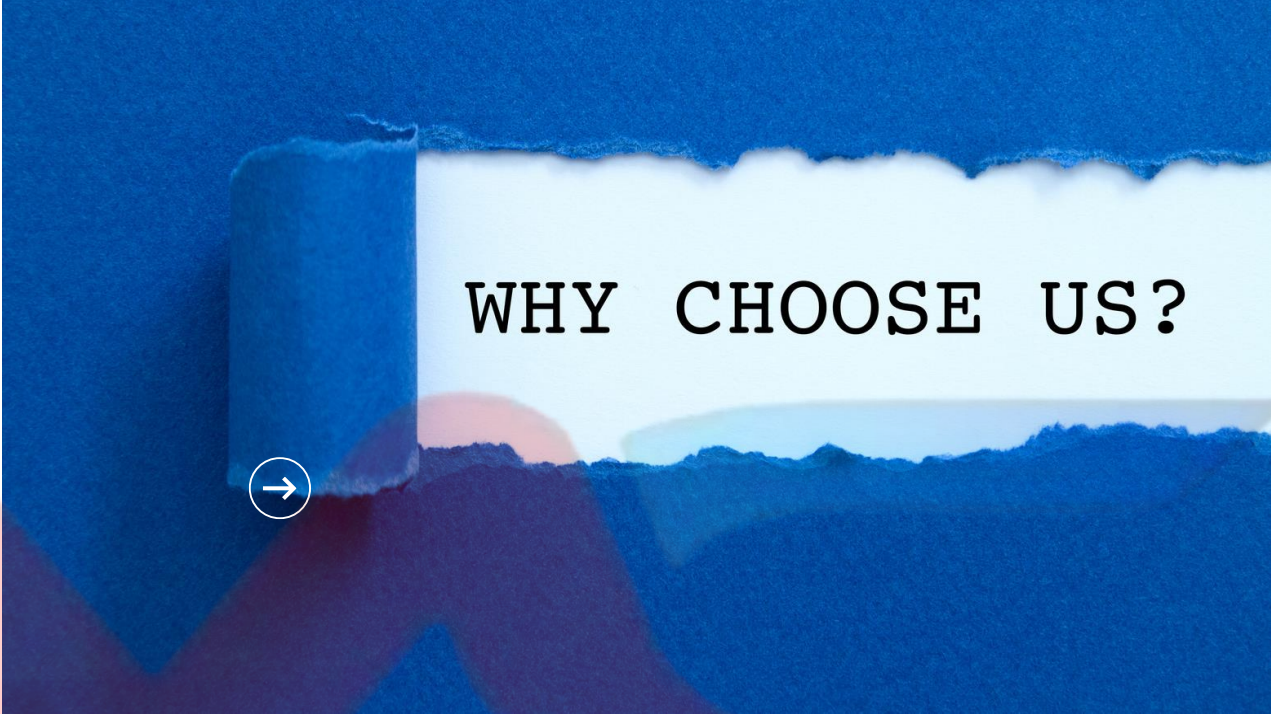


OUR PRESTIGIOUS CLIENTS





Why Choose Us?



Premium Quality



Innovation



Reliability



Contact Us



[4002 0065](tel:40020065) | [7746 9373](tel:77469373)



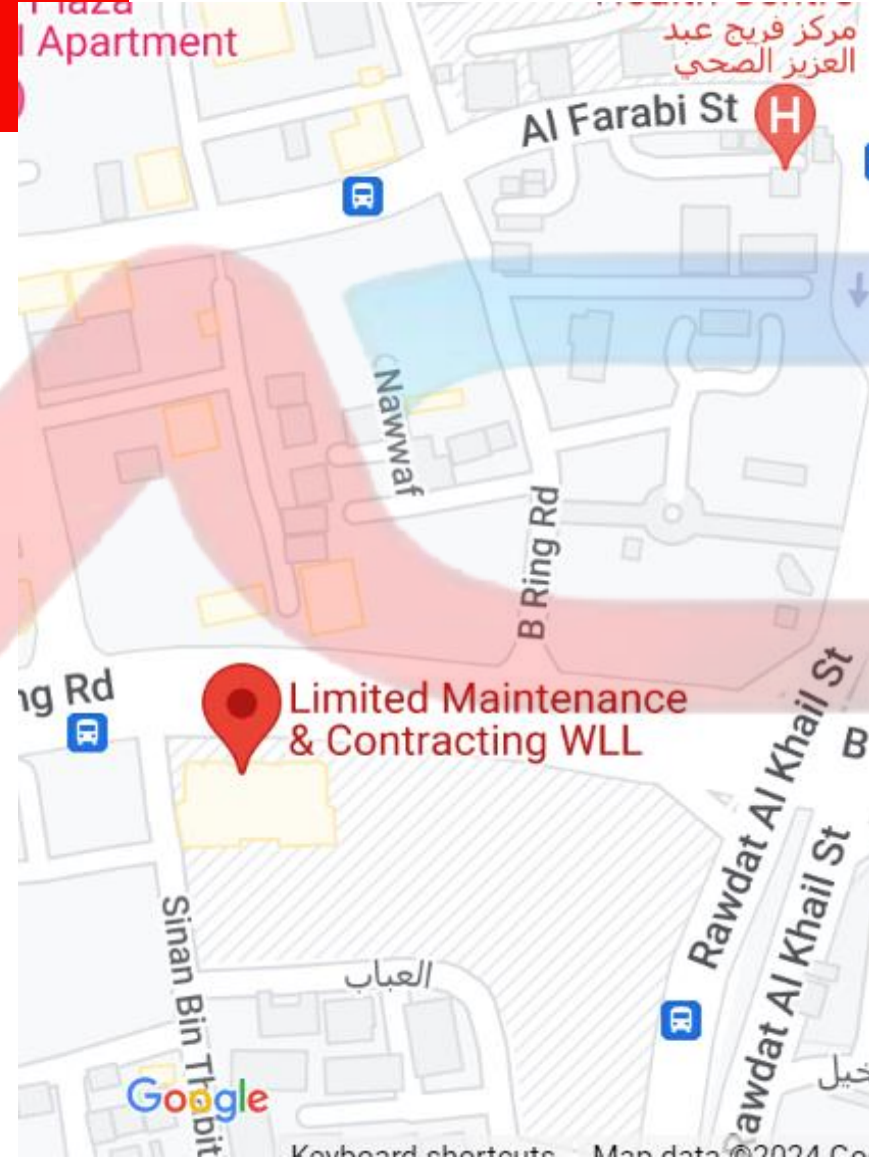
INFO@LMCQATAR.COM
SALES@LMCQATAR.COM



www.lmcqatar.com



407, 4TH FLOOR, 149 BUILDING, B RING ROAD, DOHA, QATAR.



A collage of construction tools and safety gear held by gloved hands against a blue and red background. The tools include a white hard hat, a blue power drill, a hammer, a wrench, a screwdriver, a paintbrush, a saw, a pry bar, a chain, and an orange hard hat. The hands are wearing white work gloves. The background features a blue sky and a red ground, with a white structure resembling a house or building in the distance.

THANK
YOU